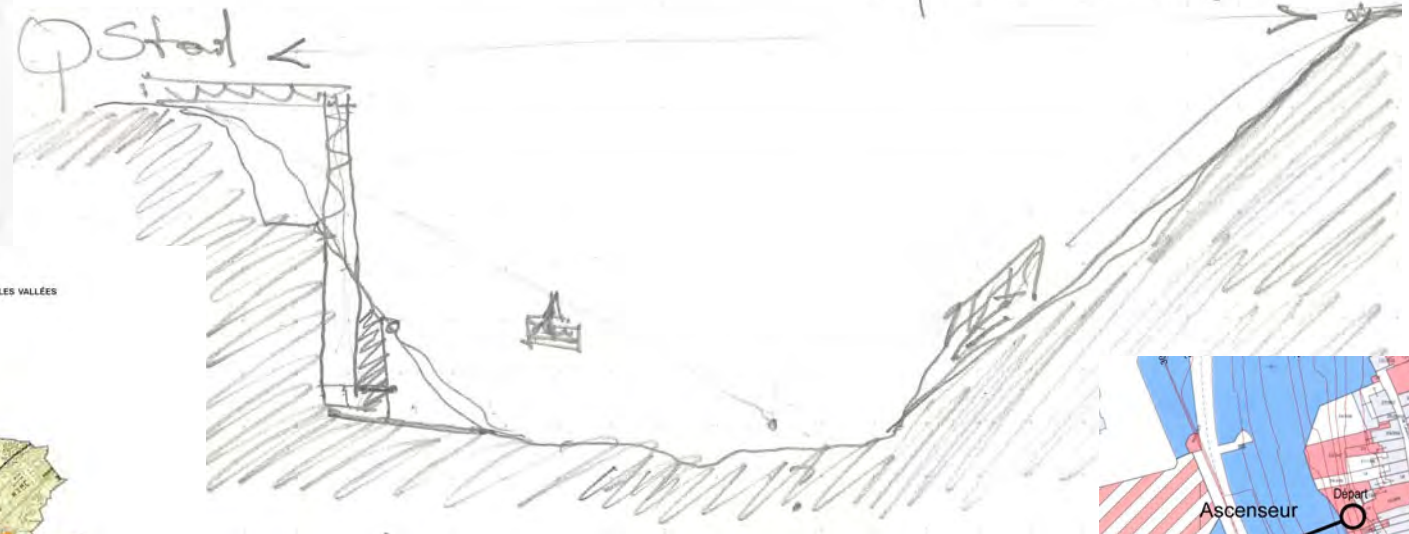
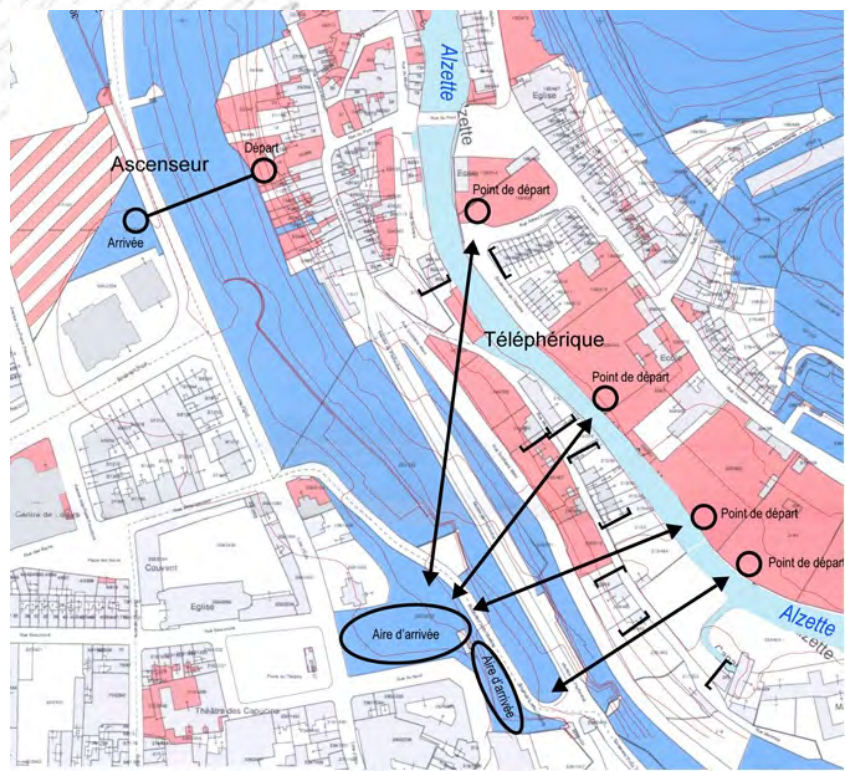
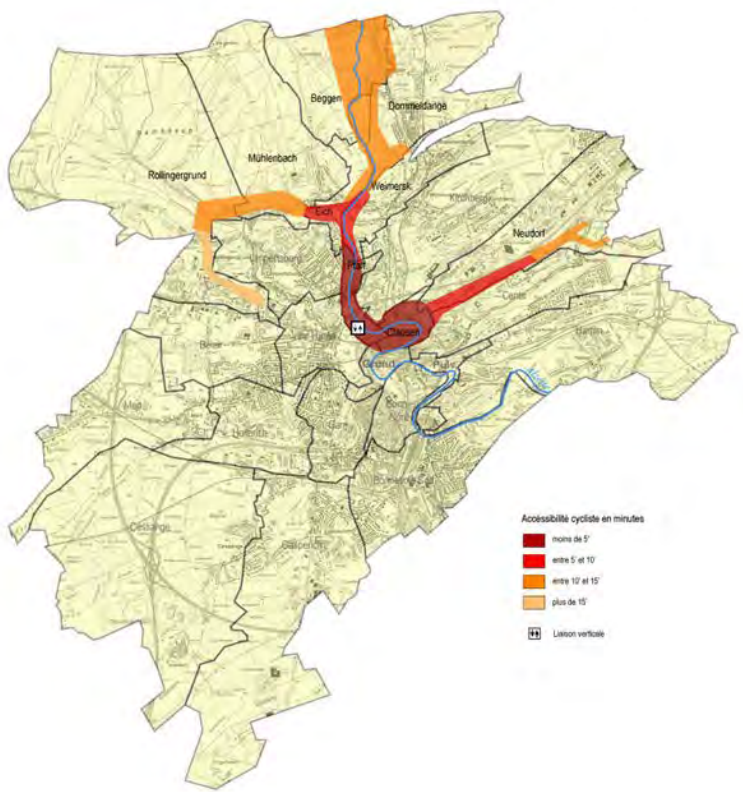




Pose
 02.10.06
 Variantes emplacements
 = Coupes à travers axes
 = Plan
 = plans cotés



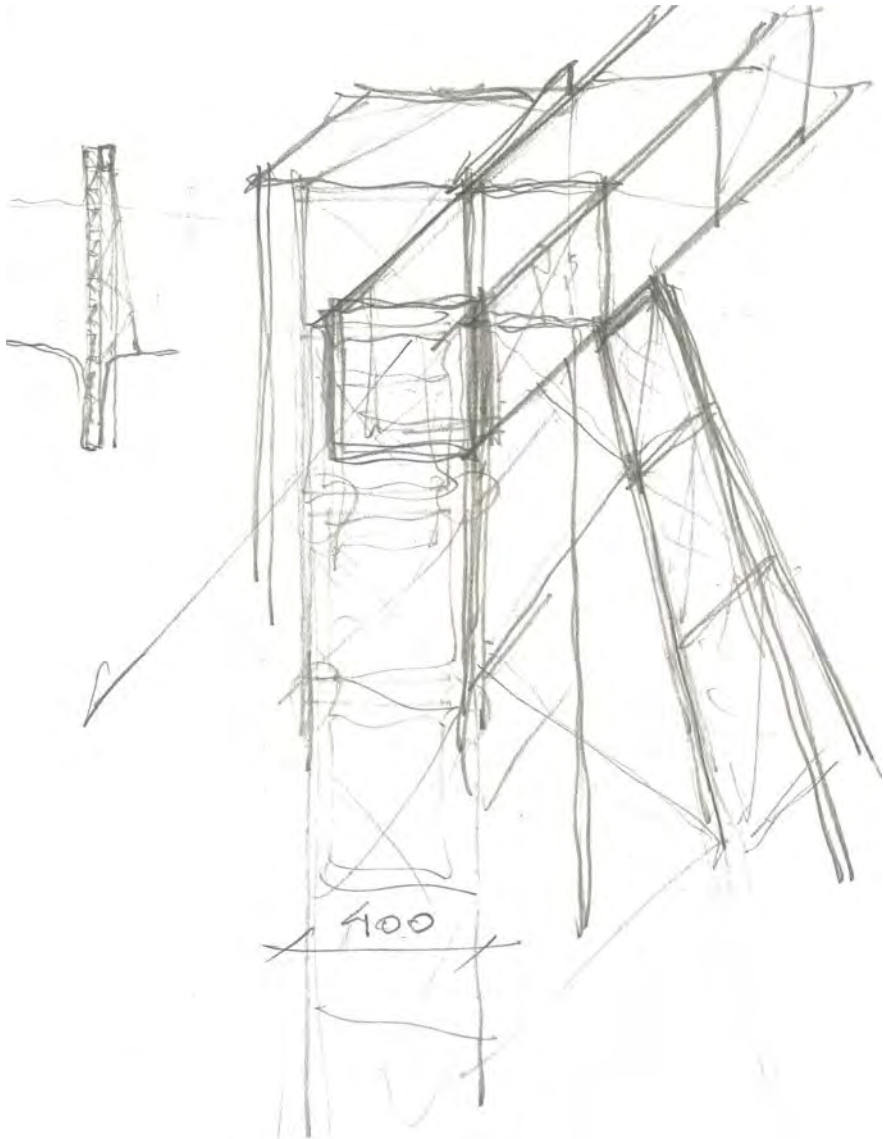
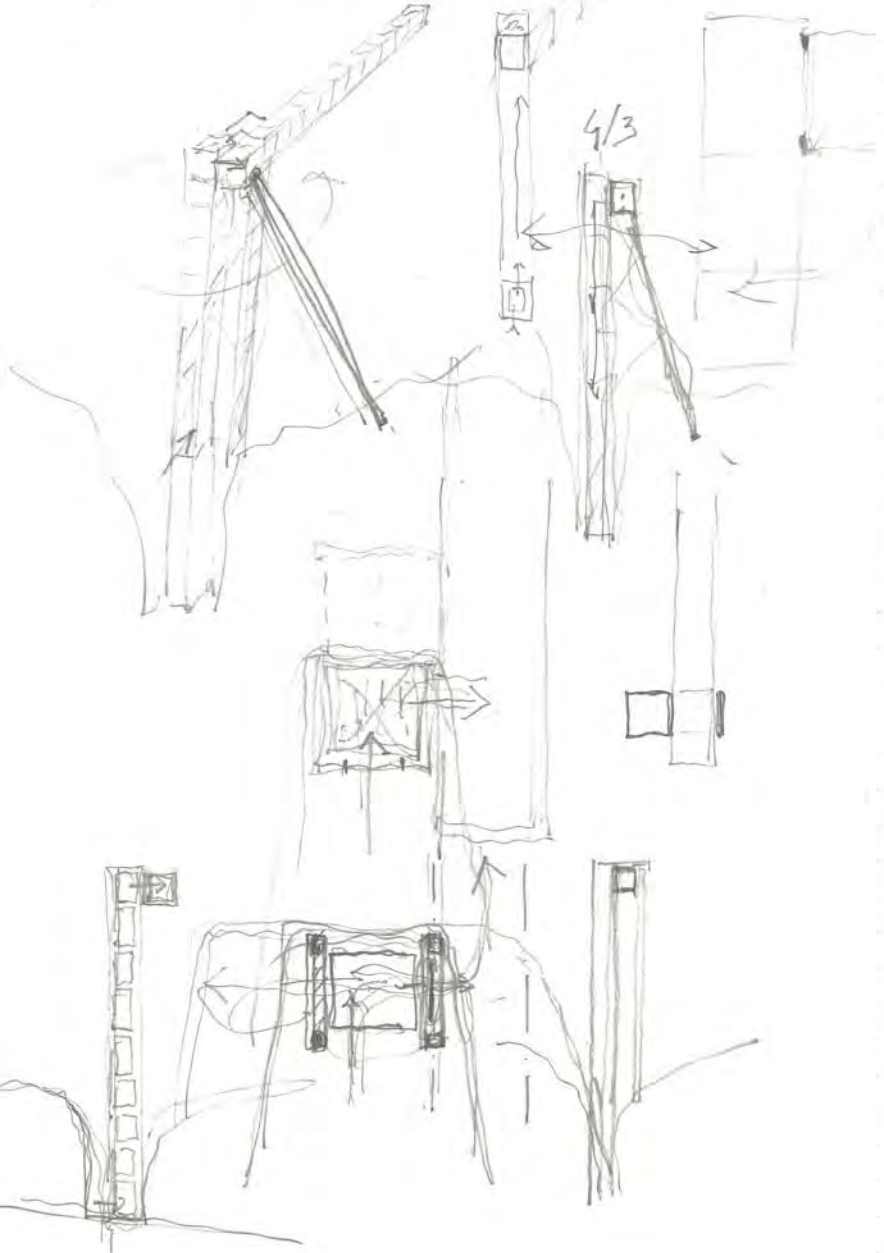
ACCESSIBILITÉ CYCLISTE DE PFAFFENTHAL DEUS LES VALLÉES



PT ASC
14.03.07

Coupe A

passerelle 300 x 300 HEB 450



PFASC PFASC
 02.06.07 18.06.07

Festung Königstein

ITM
 H. Herwig

! Ensoleillement

Course 60 m
 Poursuite 50 m

OK! Escalier
 Agrégat de
 marches
 x p^o 2^e acc.

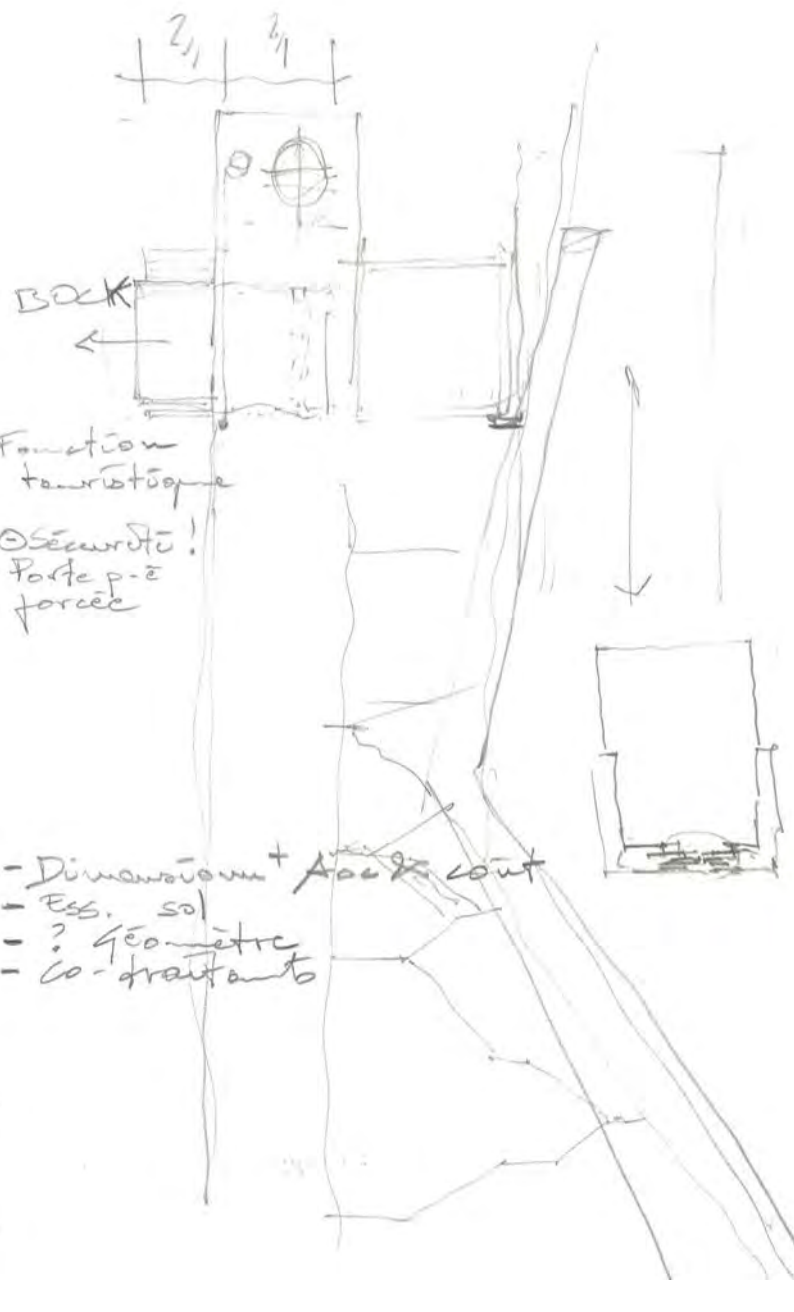
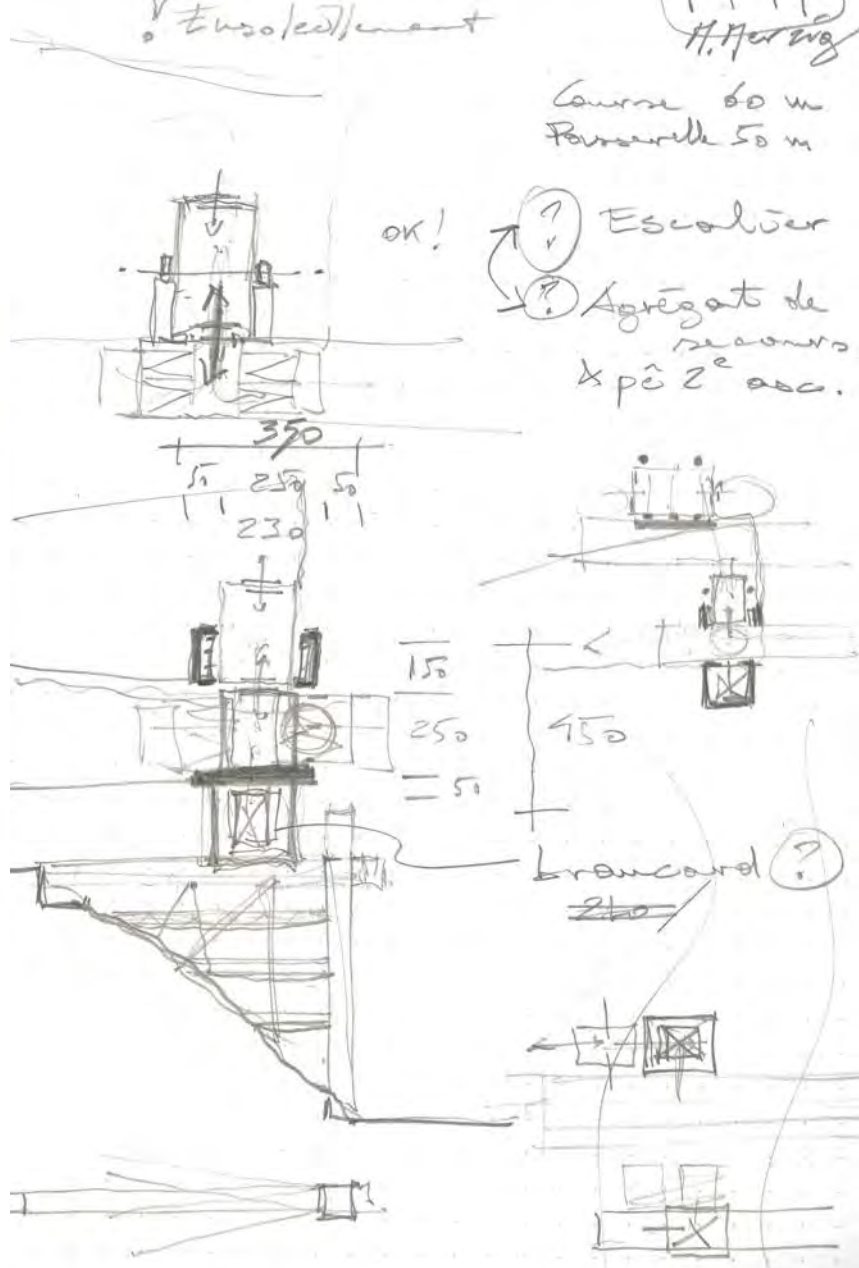
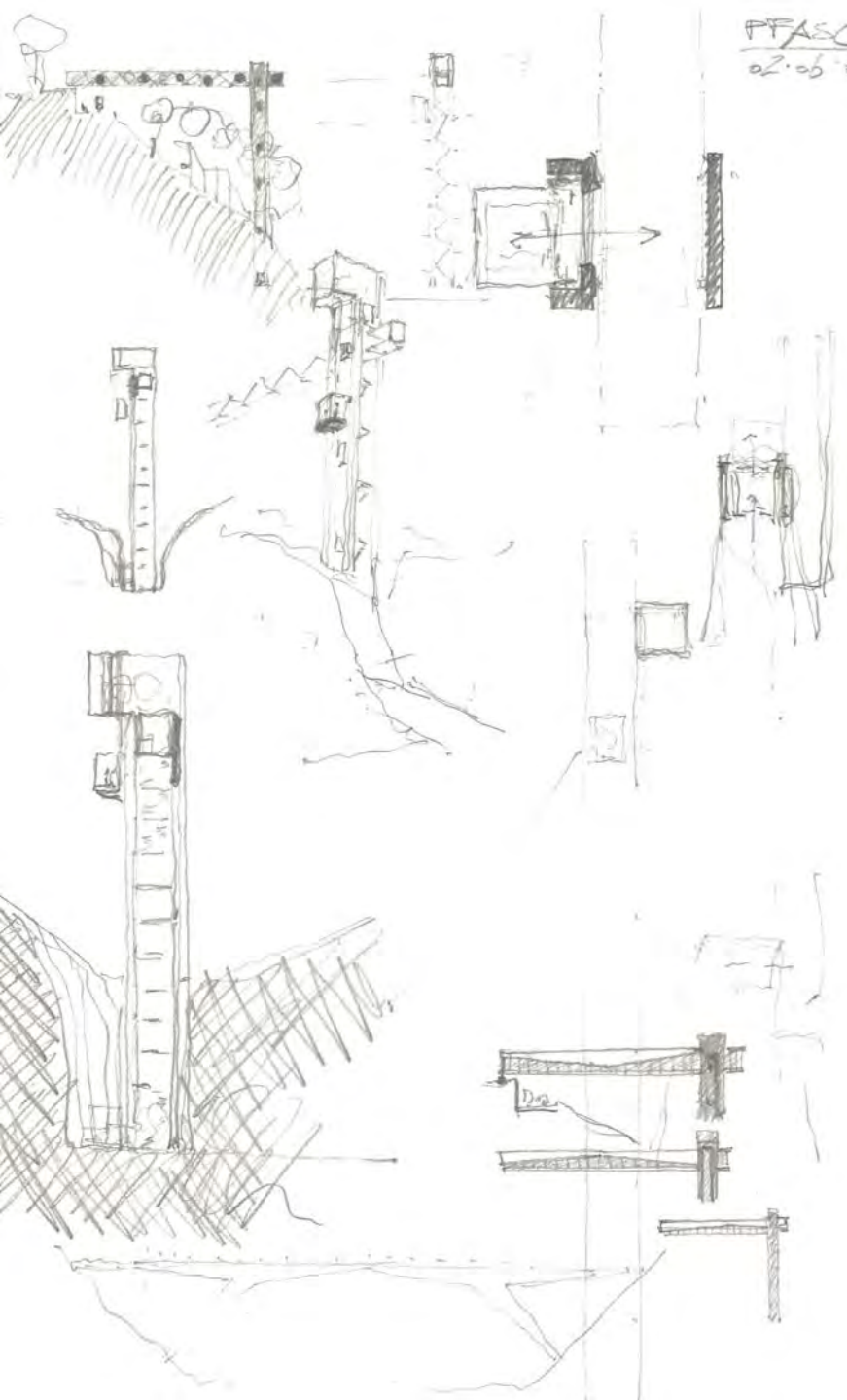
BOK

Fonction
 touristique

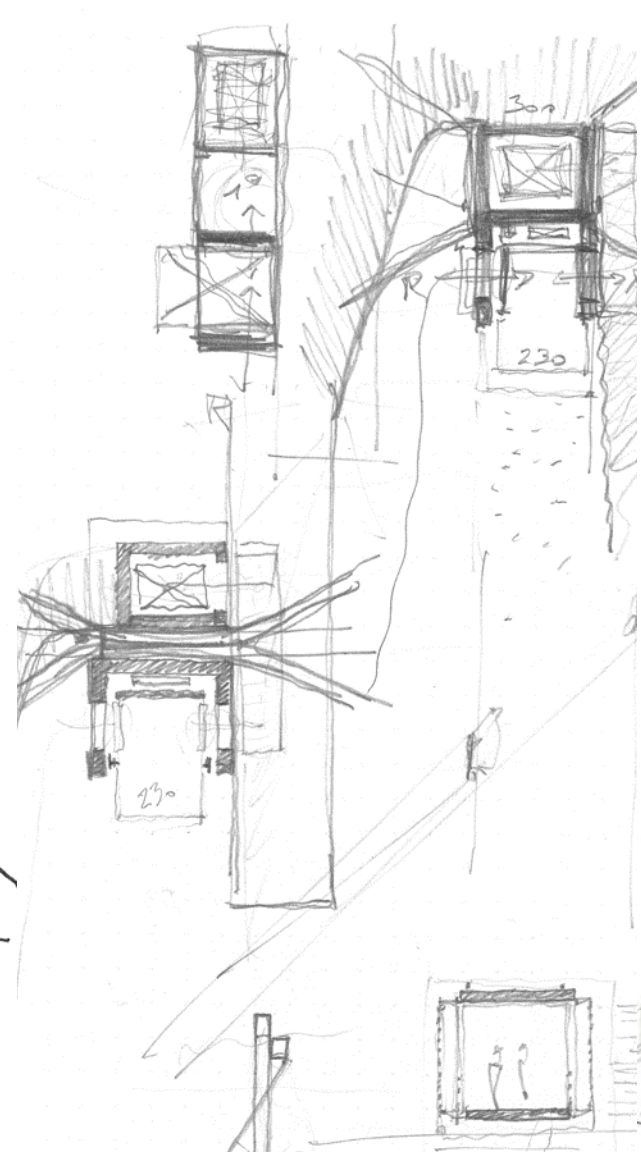
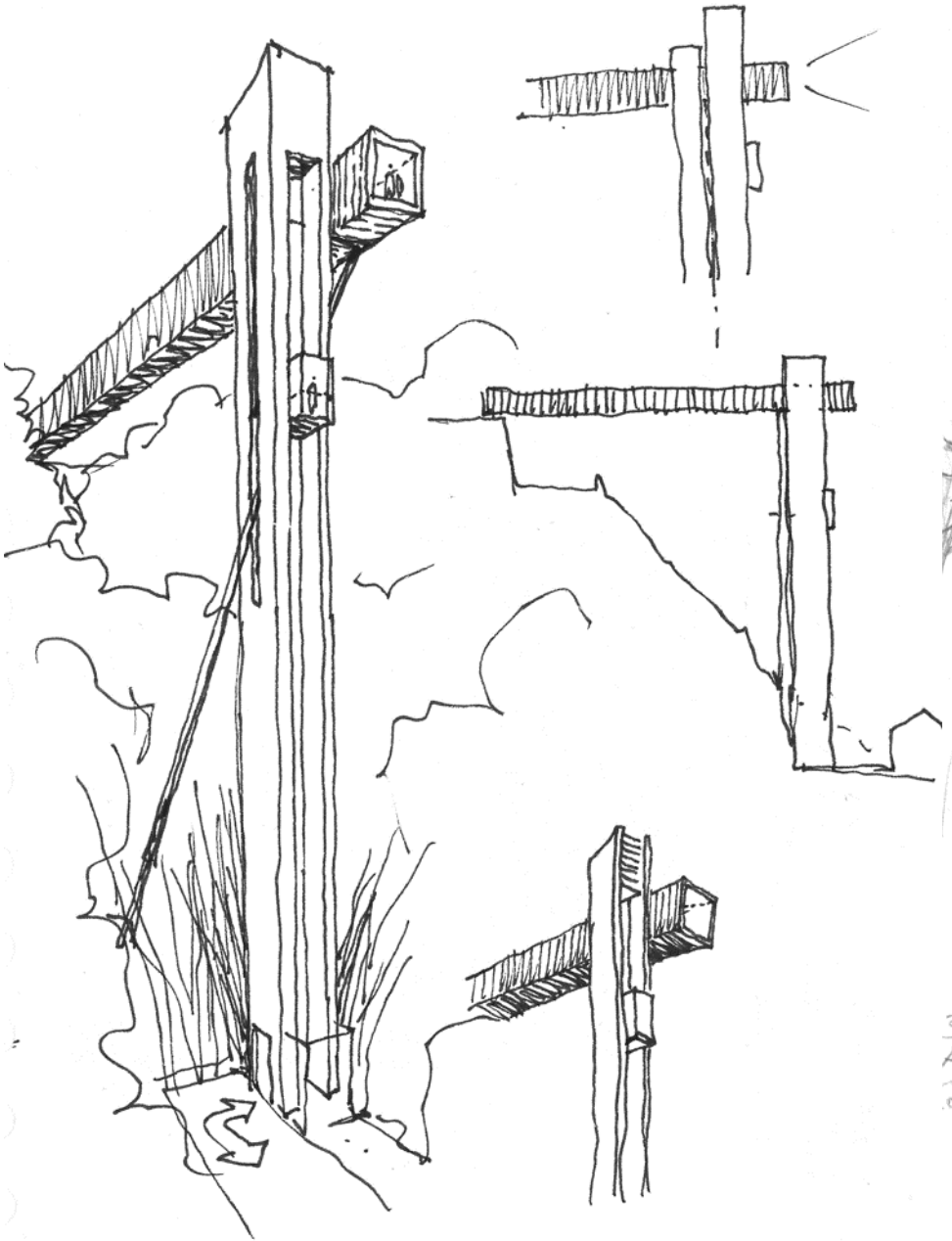
! Sécurité!
 Porte p-é
 forcée

brancard ?

- Dimensionner + Acc & cout
- Ess. sol
- ? Géométrie
- Co-contraintes

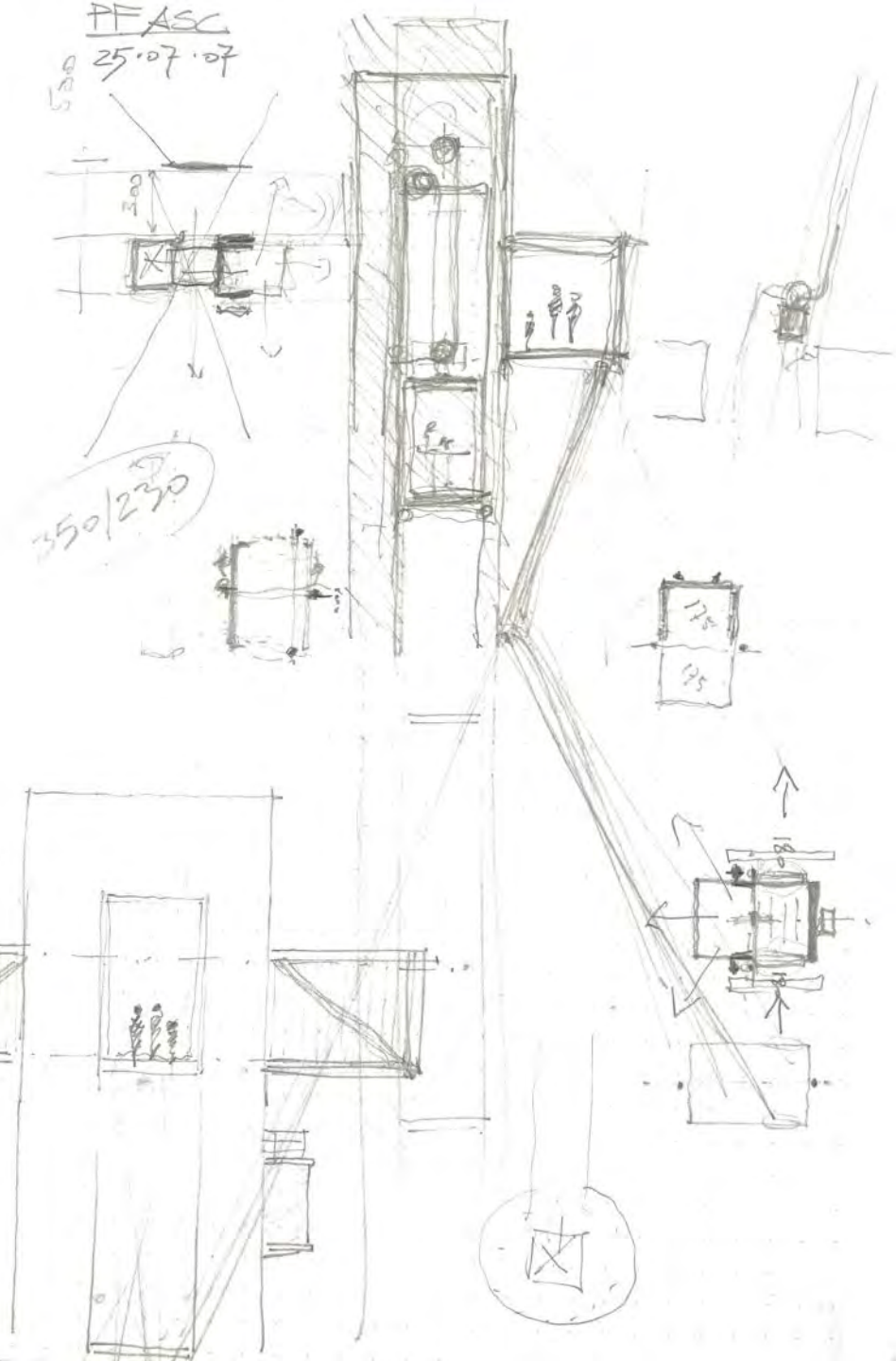


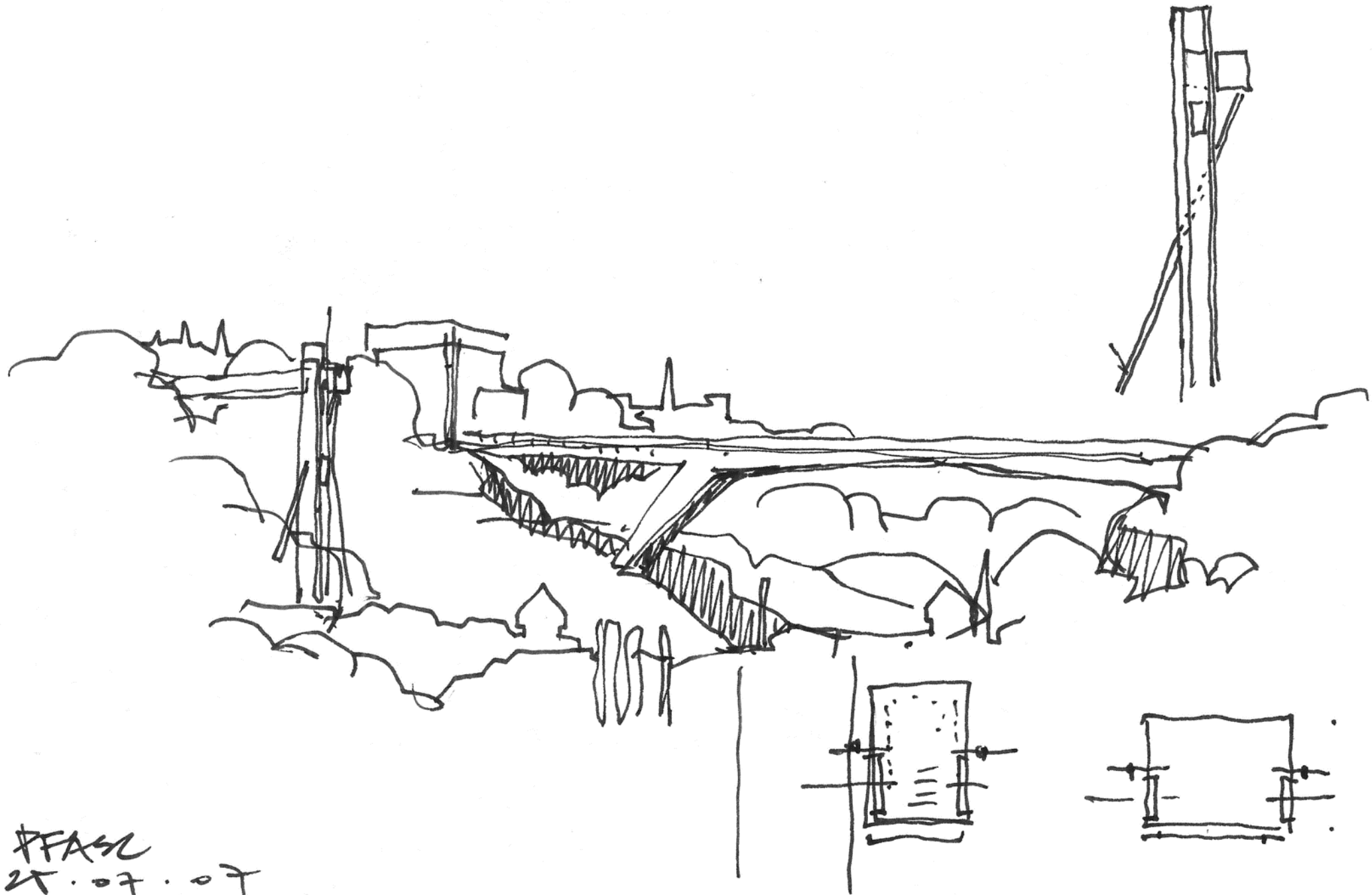
PFASC
25.07.07



3 lots
AR, gén. St. Gén. edmo.
contrat CO-contratance 3 lots
d'études intégrées, groupées
Ar cl. 4 & coût total /- 70%
- 55%

PFASC
25.07.07





#FASH
25.07.07

PFASC
27.07.07

ITM / TSE / AR
Muzio
Stanzelbit

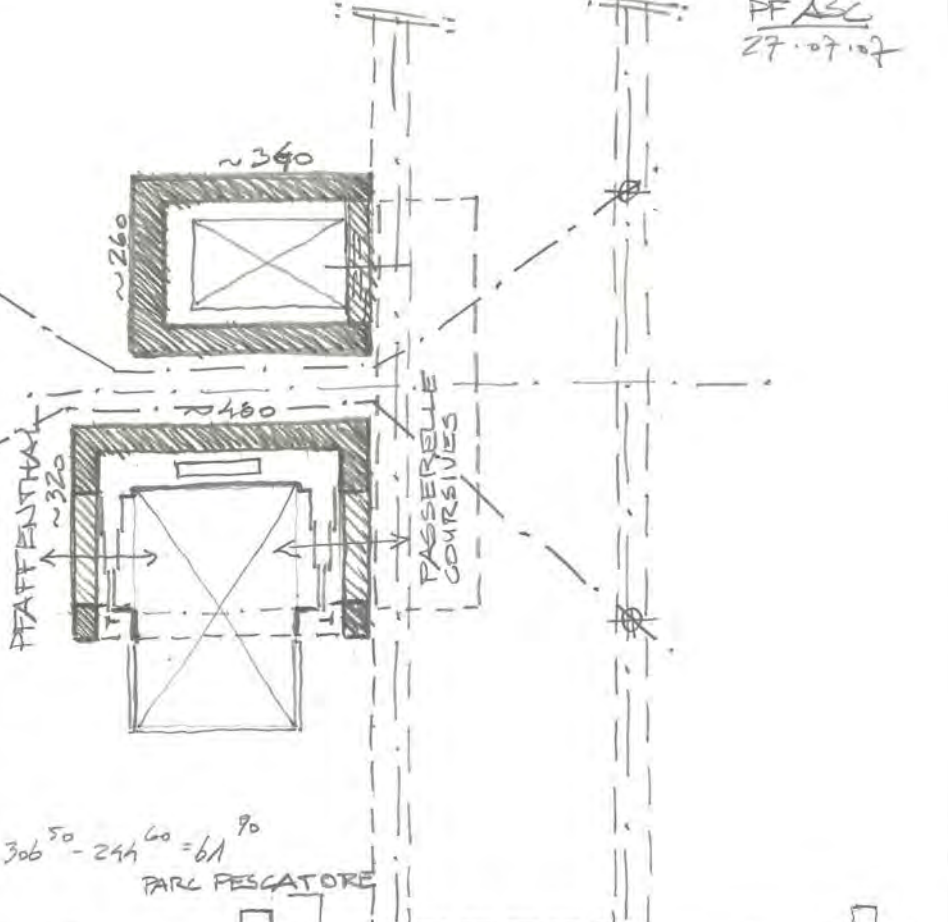
! TOLERANCES ± 0 / BETON

⊕ Agrégat de secours! en cas de panne de secours électrique
Pr un trajet & évacuer
→ Poteur

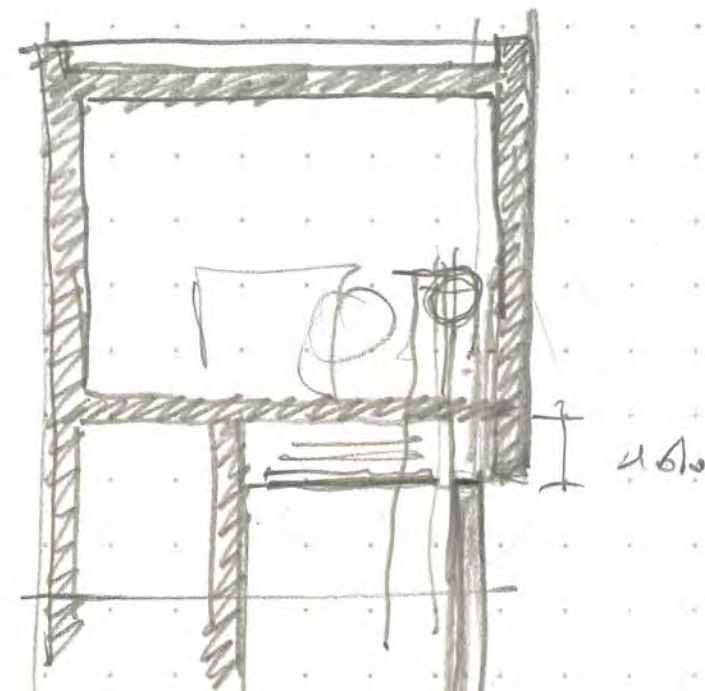
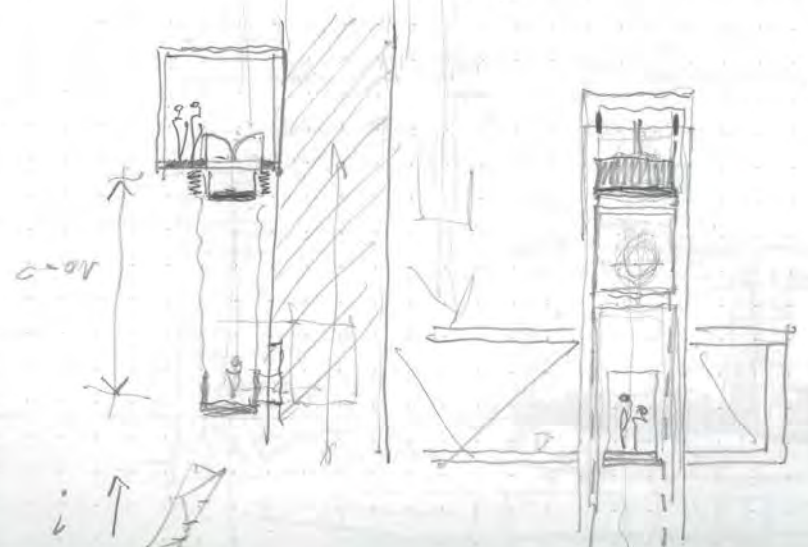
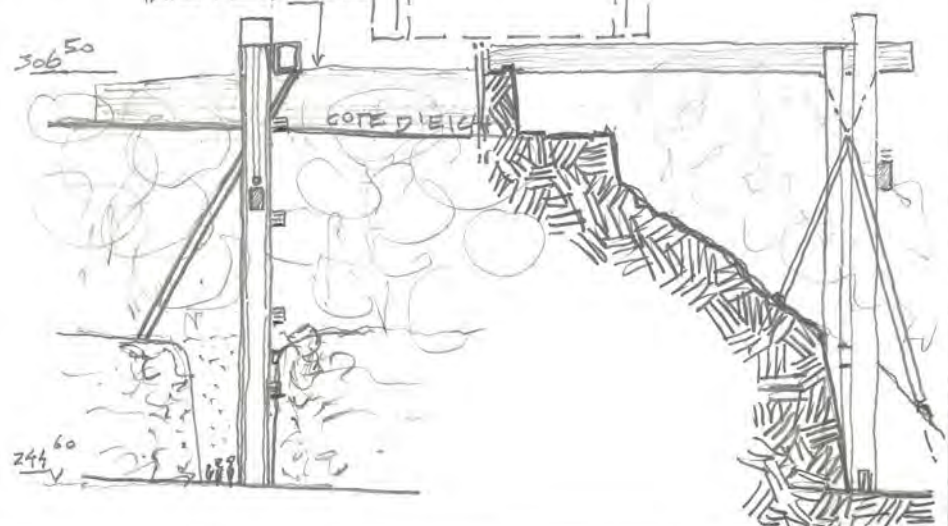
⊕ Autre panne?
→ Parachute
? Où s'arrête-t-il?

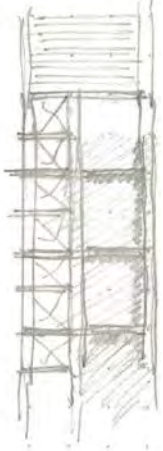
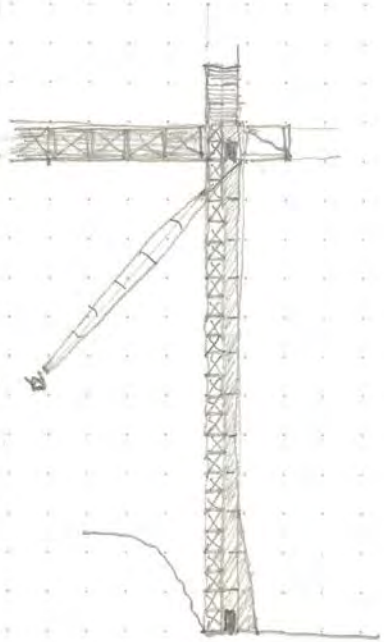
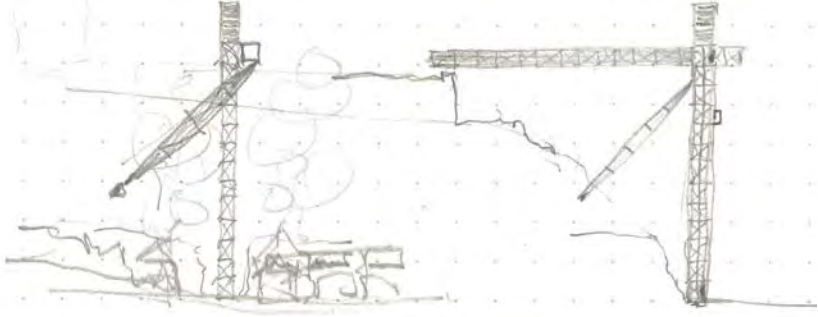
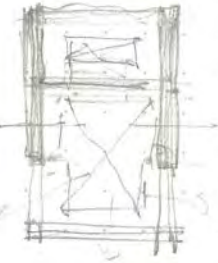
⊕ Echelle de secours pr monter sur cabine & trappe
⊕ Accès pompiers grande échelle tir garanti, avec bornes si nécessaire!

40 ? # échelle pompiers
40-60? Pour s'abriter avec corde à partir du haut
- p-ê nacelle vers le bas avec pommier stockée ailleurs...



306 50 - 244 60 = 61 90
PARC PESCATORE





FFASC
20.50.50

